

The Criminalist

The Official Publication of the New Jersey Division, I.A.I.



Winter 2004

New Jersey State Division

International Association for Identification

PRESIDENT

Rebecca Weston
Union County Prosecutor's Office (Ret.)

4TH VICE PRESIDENT

Gary Kapitan
Edison Township Police Dept.

1ST VICE PRESIDENT

Michael O'Brien
Pennsville Police Dept

SECRETARY/TREASURER

Joseph Taussi
Middlesex County Prosecutor's Office
(732) 745-5736

2ND VICE PRESIDENT

John Mastalski
Bridgeton Police Department.

SERGEANT AT ARMS

Chester Zalegowski
Pennsylvania State Police (Ret.)

3RD VICE PRESIDENT

Al Riccio
Bergen County Sheriff's Office

HISTORIAN

David Gamble
Monmouth County Prosecutor's Office

New Jersey Division Board of Directors

CHAIRMAN

Timothy Sethman
Westmoreland County (PA) D.A.'s Office

MEMBERS

Joseph F. Racite Jeffrey Thompson
William Kirkbride, Jr. Gary Jones James O'Brien George Shigo
Robert Miller John Mehic III Timothy F. Sullivan III

THE CRIMINALIST, P.O. BOX 2413, EDISON, N.J. 08818

ISSN: 1549-5213

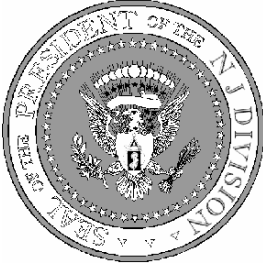
EDITOR: Robert J. Garrett, IDMAN Forensics

PUBLISHER: NJ State Div., IAI, P.O. Box 2413, Edison, NJ 08818

The Criminalist is published quarterly. Advertising is accepted and rates are posted in each issue. Articles or editorial contributions should be made on computer disk in a popular word processing format. Illustrations should be made in either black and white photography or black and white line art. Editorial assistance is available to those wishing to contribute articles.

E-mail: editor@njiai.org Phone: 732-548-8431

On the Internet: www.njaii.org



President's Message

Bob Garrett (remember him?? Now among our growing ranks of retired members) called last week. I was out in Western PA at Dad's place (Spring Break at the college always seems to agree with Dad's request to have something done on the farm). Bob left a message. Then there were a couple of e-mails. Then another message. The last e-mail sounded desperate!!! He was looking for a few words for this issue of *The Criminalist*. As editor of our publication, he does have some deadlines---- Seems he's just returned from conducting some training in Florida, or North Carolina or both . . .he's staying busy with his new job.

Bob's new job speaks to the issue of training. Quality training for those involved in crime scene and identification. Despite the acknowledged recognition of our need for formal training, agencies are hesitant to send employees away for training. The cost of lodging and travel prohibits many of us from attending quality training courses, unless we are able to pay for it ourselves

In past years, and hopefully again this year, the New Jersey Division IAI has offered quality training (at a very few dollars) to our members and many other law enforcement agencies in the State. Throughout the year other agencies in the state provide some training programs or sponsor training that is available to our members. One way to benefit from these up to date training programs is to sponsor one. Bringing the training to your agency or your academy affords quality training to a number of individuals at a substantial savings.

The parent body of the IAI supports some of

this training and advertises available training programs. A program such as Ron Smith's Palm Print symposium is available to you for the cost of training---no travel or lodging expenses---when Ron is sponsored by a local department. Individual trainers have their own contracts and may, as an incentive, provide a free chair for the sponsoring agency. It is worth exploring the possibilities.

This week I have been watching the battle of the experts in the Jason Williams case. I am reminded of the number of different training programs I attended where these experts participated as instructors. Today, the cost of attending one of their courses off-site is prohibitive. But last year, Bergen County brought Dr. Lee to their academy to teach Blood Spatter Pattern recognition at a cost that was reasonable and acceptable for all. It's something to consider.

If you would like to sponsor training, you may check the IAI's web site at www.theiai.org for information about available courses

In closing, I want to extend my heartfelt sympathies to the family of Jay Wallace who passed away recently. Jay was a friend and colleague to our organization for many years. He will be greatly missed.

I hope to see you all at our April meeting in Bergen County!

Rebecca Weston



THE MAIN REASON FOR A LOCAL AFIS is criminal investigation — it has to help you solve crimes, close cases and ultimately send a few criminals up the river. To do that it has to excel at locating possible matches of poor quality crime scene latents; then make it easy for a qualified examiner to view comparisons and accurately verify matches. That is the reason AFIX Tracker® is chosen by more departments than any other PC-based AFIS. Designed by latent print examiners for latent print examiners, it hits crime scene latents like no other system in the world.

Tracker® is easy to learn and operate. The new SmartExtract® feature makes entry of ten-prints and live scan images virtually automatic. Because it imports and exports FBI compliant EFTS/NIST files it is compatible with most live scan devices and can exchange files with other agencies. Its search, match and comparison features rival the most expensive AFIS systems. Plus, it handles something *very important* that many of those systems cannot—*palmprints*.

INTERESTED IN LEARNING MORE?

We'll do our best to supply you with all the information you need to decide whether AFIX Tracker® is right for your agency. Brochures, videos and our web site will go a long way in helping you with that decision, but the best thing we can do is put you in touch with other investigators and latent print examiners who are using it everyday in crime scene investigation. In addition, we can arrange an on-site demo in your department. So give us a call today.

AFIX Tracker version **4**

The Phoenix Group, Inc.
205 N. Walnut
Pittsburg, KS 66762

Phone: 620-232-6420
toll free: 877-438-2349
fax: 620-232-2606

<http://www.afix.net>

Creating 1:1 Images with Adobe Photoshop©

Lt. R.J. Garrett, Ret.,CSCSA, FFS
IDMAN Forensics, LLC

More and more investigative agencies and crime laboratories are turning to digital photography as the primary archival means of recording crime scene and evidence images. The technology has matured sufficiently to allow for the replacement of film based photography, in most instances. Many of the cameras being used are based on their 35 mm counterparts. This reduces the learning curve because many of the controls and lenses are the same as the film based models.

Flat bed image scanners make it easy to scale, by size and resolution, any flat piece of evidence i.e. fingerprint lifts, impressions developed on paper, stains on flat material etc. But, they are useless for recording evidence that has any depth, requires special filtration, existing light or oblique light photography or photography utilizing a forensic light source.

Many of our evidence images will need to be examined by a specialist in order to make a determination regarding identification, uniqueness or interpretation. This requires a life size or one to one (1:1) reproduction of the image. The specialist will use this reproduction to compare to known exemplars such as a fingerprint card or inked shoe impressions. They may also need to take measurements from the photograph as in the case of bloodstain pattern analysis.

Making 1:1 reproductions in the darkroom is a fairly simple task. Just align the scale in the image with a similar scale placed on the easel and adjust the enlarger head until the two scales are the same size. Digital images take more of an effort to scale correctly and an understanding of pixel size, resolution and re-sampling.

Another consideration, especially for latent prints that are on their way to an AFIS system, is that the images not only need to be sized 1:1,

but also need to be sized to a specific resolution. Digital images of fingerprints destined for IAFIS must have an image resolution of 1000 ppi (pixels per inch) or 500 ppi.

If you use a digital camera with a lens that can not capture images at 1:1, you will have to adjust the image size using photo editing software. You may also find that various software packages may interpret the size of images coming straight from your camera differently. Adobe Photoshop© is one the most powerful image editing programs used by professionals. It has a variety of tools that will enable you to enhance images as well as properly size them.

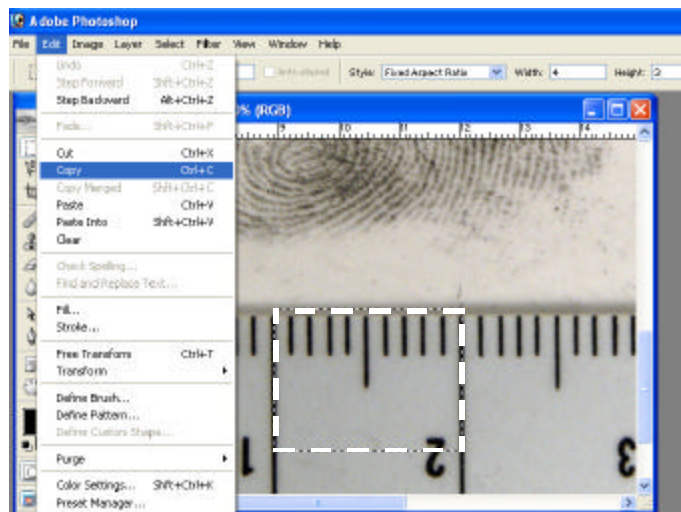
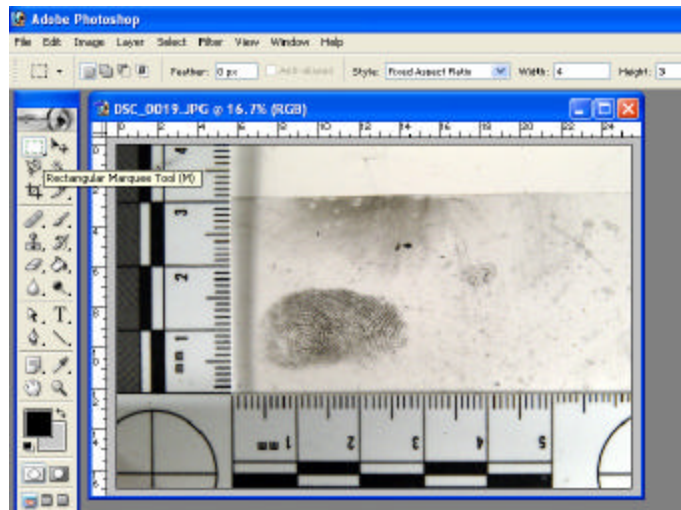
The method described here is useful in sizing a part of the image containing a scale as well as the entire image. If your scale covers the entire area that needs to be sized, you can crop the image, referencing the scale in the image, and just resize using the sizing tool in the image menu. The original image should be saved in its entirety.

It is very important, when resizing, to make sure that the “re-sample” box in the sizing window is not checked. Re-sampling the image will cause the loss of image information or add information to the image if the resolution figure entered is larger than the original.

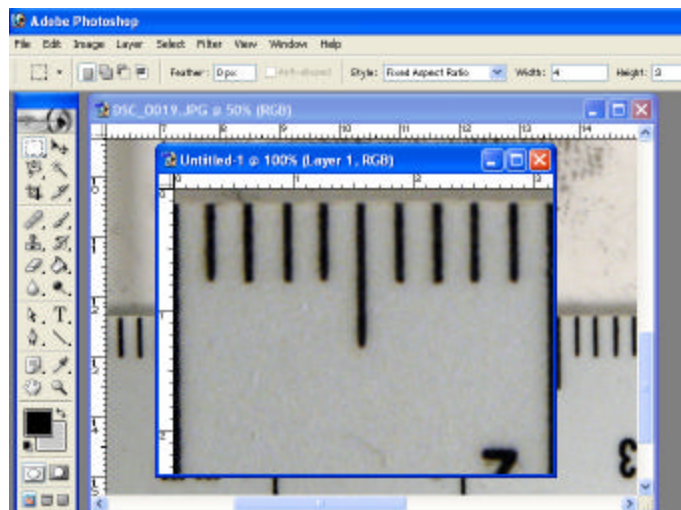
Recommendations and guidelines for dealing with digital imaging and latent prints can be found in the documents published by the Scientific Working Group on Imaging Technologies (SWGIT). These documents are available online at various web sites including the IAI’s web site, www.theiai.org and the FBI’s web site at www.fbi.gov. Most search engines will display a number of hits just by entering the acronym SWGIT.

Creating 1:1 Images with Adobe Photoshop©

Step 1: Open the image in Photoshop. Zoom in on the scale in the image. Reference either the horizontal or vertical axis. Select the rectangular marquee tool. Draw a selection around a one centimeter segment of the scale (or one inch segment if an inch scale was used). Go to the edit menu and click on “copy” (or use the ctrl+c key combination).



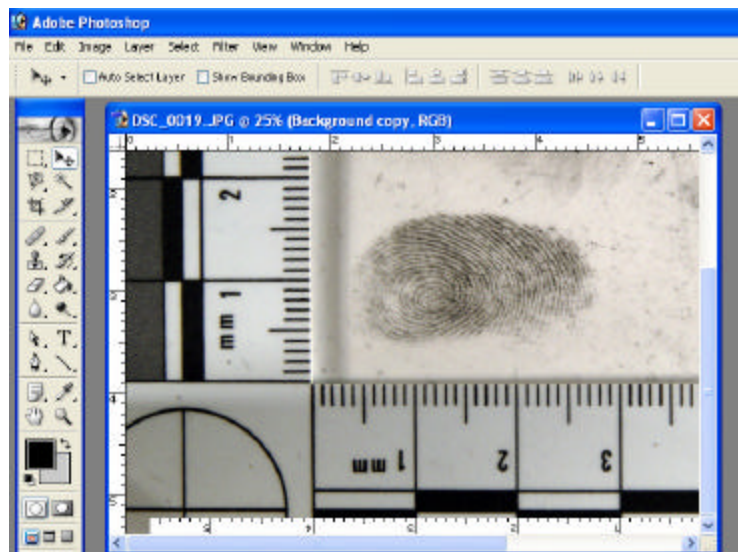
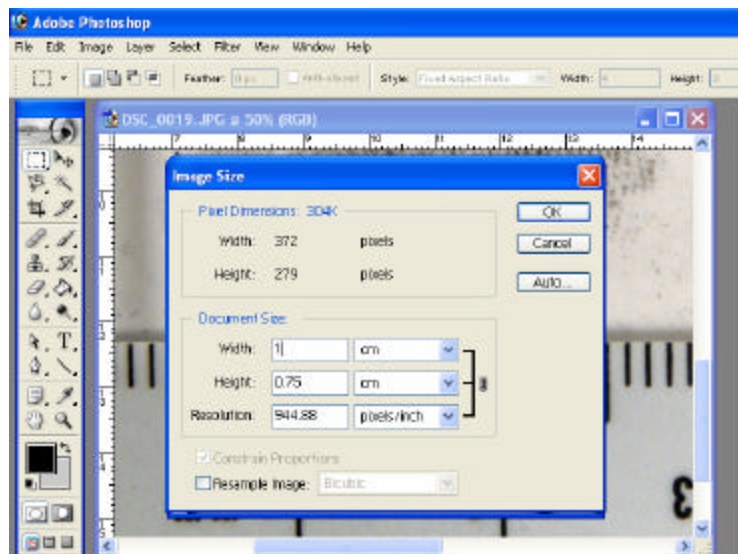
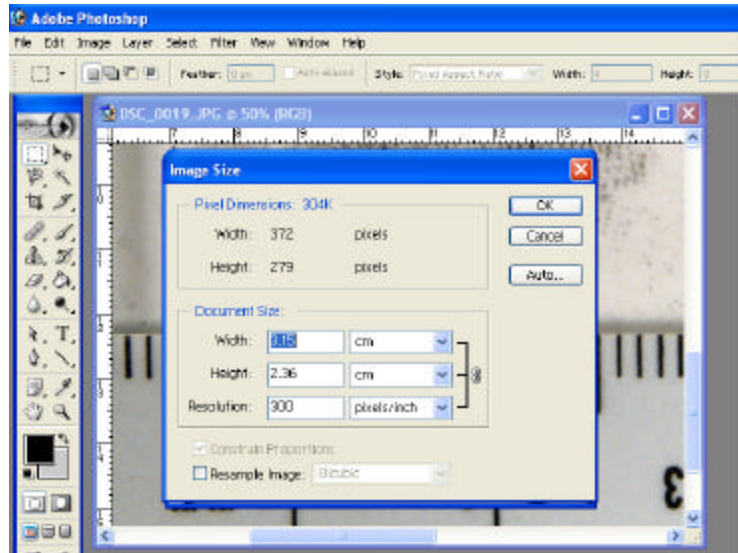
Step 2: Go to the file menu and create a new image. Once the new image window opens, return to the edit menu and click on “paste” (or use the ctrl+v key combination). The selected portion of the scale will be pasted into the new image.



Step 3: Go to the image menu and select “image size”. In the “Document Size” box, make sure that the size units are the same as on the scale used (inches or centimeters). If you used the horizontal axis for your selection, enter 1 in the “Width” box. If you used the vertical axis, enter 1 in the “Height” box. Make sure that the “resample” box is **not** checked. Observe and remember the new resolution number that now appears in the “Resolution” box. Close the new image without saving and return to the original image.

Step 4: With the original image active, go to the image menu and click on “Image Size”. In the “Image Size” window, make sure that the “Resample Image” box is **not** checked. Go to the “Resolution” box and enter the resolution number you saved from the previous image. Click “OK”.

Step 5: The original image is now sized one to one. Go to the file menu and save it. It can then be printed out for a latent examiner to compare.



INTRODUCING THE
GoldPanther™
Forensic Light Source Kit



If the perpetrator has left some trace behind that will prove his presence at the crime scene, the GoldPanther™ is...
the answer you need!

The FAL2000 GoldPanther™ Forensic Light Source Kit represents the latest innovation in Forensic Investigative Equipment. Physical evidence is the backbone of any criminal investigation. And without it, many prosecutors are reluctant to file formal charges.

This compact, self-contained light source is fully portable (no interconnecting cables or shoulder packs) offering unlimited freedom to move about the scene. It can be hand-held in two different positions or mounted on a standard photographic-type tripod. Battery operation permits searching a multitude of surfaces, even in the tightest situations—especially when searching for microparticle, physiological or latent print evidence.

The high-intensity Xenon lamp produces light that approximates sunlight, and six (6) bandpass filters cover the full spectrum (365nm-530nm) needed to identify many forms of physical evidence such as semen, saliva, materials with natural fluorescence, and fluorescent powders and dyes. High-intensity white light is available for locating hairs, fibers, dust prints and more.

The filters are contained in two sliding filter arrays that permit quick selection of individual wavelengths and changeover from one array to the other. Detents machined into each array provide positive positioning.

The intense light source and hi-transmission filters simplify photography when the camera is equipped with the appropriate barrier filter. *Three 49mm Barrier Filters are supplied: orange, red, and yellow.*

The rugged construction of the FAL2000 will provide many years of trouble-free service under the most demanding situations. The lamp assembly features a combination of precision-machined aluminum parts and high-impact plastic. A pre-focused, polished lamp reflector insures a consistently even circle of bright, intense light.

For more information or a full-color brochure, contact
SIRCHIE® Finger Print Laboratories, Inc.
at (919) 554-2244, (800) 356-7311 or visit our website at www.sirchie.com



The Criminalist

Official Publication of the New Jersey Division, IAI

Advertisement/Rate Form

Corporate/company name		
Mailing Address		
City/town	State	Zip code
Contact person	Telephone number	

Full page \$200.00 Half page \$100.00 Quarter page \$50.00

Business card \$30.00

Prices are for ads that will appear in four (4) issues of the Criminalist. Advertisers must supply their own copy. Line art, black and white, gray scale and half tone images are all acceptable for publication. If a different ad is to appear in each issue, please include a \$10.00 surcharge with the new copy. Advertisers will receive a copy of the Criminalist each time their ad is to appear. Publication dates are December, March, June and September. Submit this form, a check payable to the NJ Division, IAI in the appropriate amount and a clean copy of your ad (or computer disk with the ad in .bmp, .tif, Word Perfect or MS-Word format) to: The Editor, The Criminalist, P.O. Box 2413, Edison, NJ 08818. Your ad will appear in the next four (4) issues. The Criminalist and the NJ Division, IAI, reserve the right to refuse copy for products deemed inappropriate for a professional publication or subject matter which is deemed contrary to the goals and ideals of the International Association for Identification.

Special Instructions

First issue for ad to appear:

Check received: Check no.: Amount:

1/99

In Memorium

Past President and Member of the Board of Directors Jay Wallace passed away on Monday, March 1, 2004. He was cremated and there will be no service at the family's request. Most of us are aware how Jay suffered with his health in recent years. We pray that his suffering is over and remember with fondness and admiration his service to the NJIAI.

Jay had been a Forensic Specialist with the Bridgeton Police Department. He was awarded the Paul F. Scully Service Award which was presented to him at the 14th Annual Educational Conference held in Cape May, NJ, October 22-25, 2000.

Jay had served as a NJ Division Vice President, President, Chairman of the Board and was, until his death, a Board Member. He also served on the Planning Committee for the hosting of the International Conference held in Atlantic City, N.J. Jay served on the International's Membership committee. He handled the good of the order chores for the State Division.

Jay was an IAI Certified Latent Print Examiner and a Certified Senior Crime Scene Analyst. He retired from active duty with the Bridgeton Police Department in 1998.



The 18th Annual Educational Conference of the NJ Division, IAI, will be held at the Trump Marina Hotel and Casino, October 17—20, 2004. Watch future issues of *The Criminalist* and the web site, www.njai.org, for the conference schedule and registration details.

Training/Meeting Announcement

The next quarterly training/business meeting will be on Wed. April 14, 2004, 9:00 AM at the Bergen County Sheriff's BCI Building. The topics will be:

Working the Crime Scene:

The Murder of Fair Lawn Police Officer Maryann Collura

Det. M. Stallone, BCSD BCI

and

Recognizing & Identifying Street Gang Signs at the Crime Scene

Det. J. Viola, BCSD Gang Unit

DIRECTIONS

The BCI building is located behind the County Jail, at 160 South River Street Hackensack, NJ B.C.I, Ph# (201) 678-3333

N J Turnpike from the south. Take the Turnpike North to Exit 18 E or W, does not matter. Then take Route 80 West **LOCAL** to Exit #66 Hudson Street Hackensack. As you come off the ramp, you will be on East Kennedy St. Go through first light (Hudson St), to the second light, make a left onto River St. The jail is up on the right about a ¼ of a mile, across from a wicker outlet. Take the first driveway and follow the road back behind the jail, BCI building is on the right, along the river.

Business meeting to follow

I.A.I. sponsored training:

Course Title: Demystifying Palm Prints

Cost: \$300.00

Instructor: Ron Smith, C.L.P.E., S.C.S.A.

Dates: June 14 - 16, 2004

Location: Bergen County Law and Public Safety Institute
281 Campgaw Rd, Mahwah, New Jersey 201-785-6000

For more information regarding these seminars please contact:

Ron Smith & Associates, Inc.
Training Division
P.O. Box 4436
Meridian, Mississippi 39304
Office: 601-485-7606 Fax: 601-485-7622
Email: training@ronsmithandassociates.com



Leaders in filtration and contamination control equipment, *Air Science Technologies* has a range of cabinets designed specifically for forensic applications. Whether you need to protect the operator or the evidence we have a range of cabinets to suit your needs.



Fingerprint Workstation

- Unique downflow air pattern to capture fingerprint powder
- Unrestricted access
- Compact design
- Carbon and HEPA filters



Ductless Fume Hood

- Provides operator protection from fumes and particle hazards, such as ninhydrin sprays & superglue
- Advanced monitoring and safety features
- Non-polluting and energy saving



PCR Workstation

- RNA/DNA sampling and preparation
- Provides class 100 clean air for sample protection
- Timed UV light and advanced safety features
- Compact bench-top design



Swab Dryer

- Provides operator and swab protection
- Dries and stores swabs in a controlled environment
- Protection from airborne hazards & bacterial pathogens
- Protection of swabs from cross contamination
- Compact design



Forensic Evidence Cabinet

- The activated carbon & HEPA filters ensure a safe working environment for personnel and protection of evidence from cross-contamination
- Many sizes available
- Easy to install



Biological Safety Cabinet

- High operator protection
- Smart control panel
- Safety critical parameters monitored
- Easy to use
- Class I, II, III units available



CA Chamber

- Automated development of fingerprints
- Fully self-contained system requiring no installation costs
- Lock out safety feature which protects the door from opening when fumes are present within the chamber
- Many sizes available

Visit us on-line at
www.DUCTLESS.COM

Air Science Technologies Toll Free/800.DUCTLESS T/239.489.3200 F/239.489.0922 Email/info@ductless.com

Membership No. _____ Date Rec'd & Membership date _____ Amount Rec'd. _____



INTERNATIONAL ASSOCIATION FOR IDENTIFICATION
NEW JERSEY STATE DIVISION
APPLICATION FOR MEMBERSHIP

Please return to: PO Box 2413, Edison, NJ 08818
Annual dues: \$20.00 Active/Associate
\$10.00 Student

I hereby make application for membership in the International Association for Identification, NJ State Division, in accordance with its Bylaws and Constitution and agree to be bound by them.

I am applying for: ACTIVE ASSOCIATE STUDENT SUSTAINING MEMBERSHIP (see other side)

Name in full: _____

Business Address: _____

Home Address: _____

Bus. Phone: (____) _____ ext _____ Home Phone (____) _____
(will remain confidential)

Email Address: _____ FAX Number: _____

1. Have you ever been convicted of a crime? Yes No
(If yes, give details on other side)
2. I understand that application fees paid to the Association by any new applicant between Jan. 1 and Sept. 30 shall be applied to membership dues for that year only. Fees paid by an applicant between Oct. 1 and Dec. 31, shall be applied to the following calendar year.
3. I also understand that if I apply for sustaining membership (10X annual dues) I am relieved from the requirement of annual dues and assessments.
4. All applications **MUST** be accompanied by payment of fees, which will be refunded if application is rejected.
INCOMPLETE APPLICATIONS WILL BE RETURNED.
5. Also, I understand that my membership certificate is the property of the association and must be returned to the secretary upon my resignation or suspension.

Because this information will be used for compiling our Membership Directory, PLEASE be precise and complete **ALL** items

6. PLEASE NUMBER UP TO THREE AREAS OF YOUR EXPERTISE

Indicate your primary discipline as number 1, then other areas as 2 and 3.

-
- | | | | |
|--|--|--|---|
| <input type="checkbox"/> Fingerprint Identification | <input type="checkbox"/> Questioned Documents | <input type="checkbox"/> Polygraph | <input type="checkbox"/> Criminal Justice |
| <input type="checkbox"/> Forensic Photography/
Electronic Imaging | <input type="checkbox"/> Firearms & Toolmarks | <input type="checkbox"/> Laboratory Analysis | <input type="checkbox"/> Forensic Science |
| <input type="checkbox"/> Voice Print & Acoustics | <input type="checkbox"/> Forensic Art | <input type="checkbox"/> Crime Scene Invest. | |
| <input type="checkbox"/> Innovative/Gen. Techniques | <input type="checkbox"/> Footwear/ Tire Tracks | <input type="checkbox"/> Bloodstain Pattern Analysis | |
-

7. Employed by/enrolled at? _____ How long? _____

8. In what capacity? _____ How long? _____

9. Name of Recommender: _____ / _____
Print or type signature required

10. Address of Recommender: _____ Member # _____ Date _____

STATE DETAILS OF "YES" ANSWER TO QUESTION #1 ON OTHER SIDE:

PERSONAL HISTORY

Spouse's name: _____

Degrees and/or Honors and other qualifications for membership:

Do you wish to receive *The Criminalist* via USPS or Internet download

The Criminalist is the quarterly journal of the NJ-IAI and contains official announcements and the division training schedule as well as articles dealing with various crime scene related issues.

MEMBERSHIP QUALIFICATIONS

- Active Membership** The Active Membership of the Association shall consist of heads of Bureaus of Identification or Investigation (including persons under their supervision, who are engaged in the science of identification), heads of Police Departments, Chiefs of Detectives and Sheriffs PROVIDED however, that the foregoing persons are bona fide employees of and who receive salaries from National, State, County or Municipal Governments, or some subdivision thereof.
- Associate Membership** All reputable persons wholly or partially engaged in any of the various phases of the science of identification and who are not qualified for active membership, are hereby eligible to become associate members. They shall, in all respects, be subject to the same rights and privileges as active members, except that they shall not be entitled to election to the office of President or Vice President.
- Student Membership** Persons enrolled in an accredited educational institution, who are studying a curriculum with an academic focus on the forensic sciences or criminal justice, shall be eligible for student membership and shall enjoy all the rights and privileges of an Associate Member.

11. I certify that the information contained herein is true and correct to the best of my knowledge. Any omission or falsification of information will be a basis for rejection or denial of continued membership.

Applicant's Signature and Date _____

The best tape solution available today!



Thousands of departments like yours rely on us to provide the best tape available. Our products are field tested and you always have our 100% money-back guarantee if you are not completely satisfied. Order six or more rolls of our Split-Back Zipr-Weld tape and receive FREE custom imprinting.

WE'LL EVEN GIVE YOU THE SHIRT OFF OUR BACK!

Don't delay. Order today and we'll also send you a FREE Crime Scene T-shirt.



LYNN PEAVEY COMPANY

1-800-255-6499 • www.lynnpeavey.com

Robert J. Garrett
Editor/NJIAI
PO Box 2413
Edison, NJ 08818

FORWARD AND ADDRESS CORRECTION REQUESTED
